



CAN-AM HD WIRELESS WINCH REMOTE

A black and white photograph of a dirt path winding through a dense forest of tall evergreen trees. The path is in the foreground, leading into the distance. The trees are tall and thin, with some branches visible in the foreground. The sky is visible through the canopy of the trees.

USER'S GUIDE

219002410

Original Instruction

For more details regarding safety and usage, refer to the following website:
www.instructions.brp.com

For a more updated version of this user guide, refer to the following website:
www.operatorsguides.brp.com.

TM® Trademarks of BRP or its affiliates.

This is a non-exhaustive list of trademarks that are the property of Bombardier Recreational Products Inc. or its affiliates:

Can-Am®

All rights reserved. No parts of this Manual may be reproduced in any form without the prior written permission of Bombardier Recreational Products Inc.

©Bombardier Recreational Products Inc. (BRP) 2025

GENERAL INFORMATION

SAFETY MESSAGES

The types of safety messages, what they look like and how they are used in this guide are explained as follows:

The safety alert symbol  indicates a potential injury hazard.

WARNING

Indicates a potential hazard which, if not avoided, could result in serious injury or death.

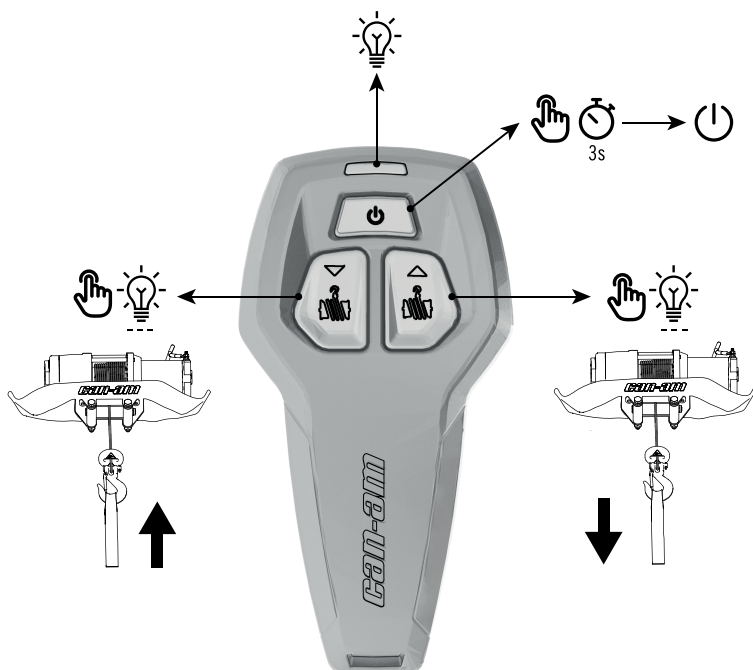
CAUTION

Indicates a hazardous situation which, if not avoided, could result in minor or moderate injury.

NOTICE

Indicates an instruction which, if not followed, could result in severely damaged vehicle components or other property.

HOW TO USE



NOTE: The remote will automatically turn off after 2 minutes without operations.

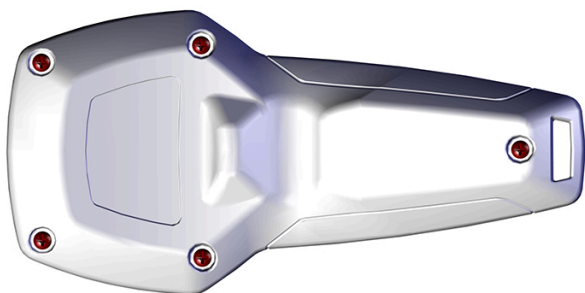
MAINTENANCE PROCEDURES

Pairing Procedure

1. Make sure the wireless remote is ON and that the receiver is powered. The following operation needs to be completed within 2 minutes, otherwise it needs to be started over.
2. To remove the current remote pairing, press and hold IN and OUT buttons simultaneously for approximately 20 seconds. The light will flash slowly, then it will turn OFF and finally turn ON indicating you can release the buttons.
3. To pair with the receiver, press and hold IN and OUT buttons simultaneously. The light will turn OFF and finally turn ON indicating that you can release the buttons.

Battery Replacement

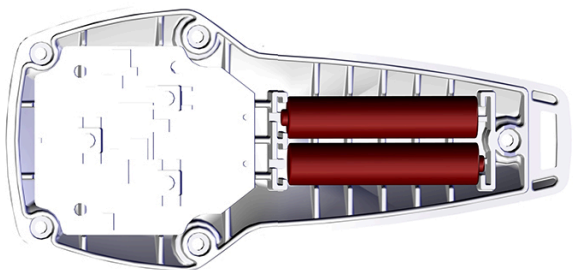
1. Remove and keep the wrist strap and the 5 battery cover retaining screws.



2. Disassemble the remote cover by gently opening the covers near the wrist strap hole.



3. Replace batteries. Ensure to respect polarities as indicated in the battery casing.



4. Reassemble cover and seal.
5. Reinstall retaining screws. Tighten to specification.

Tightening Torque	
Cover retaining screws	3.75 ± .25 Nm (33 ± 2 lbf-in)

6. Reinstall wrist strap.

This page is intentionally blank

COMPLIANCE INFORMATION

WINCH REMOTE CONTROL REGULATORY INFORMATION

US FCC

This device complies with Part 15 of the FCC Rules. Operation is subject to the following two conditions:

- (1) This device may not cause harmful interference, and
- (2) This device must accept any interference received, including interference that may cause undesired operation of the device.

This equipment has been tested and found to comply with the limits for a Class B digital device, pursuant to part 15 of the FCC Rules. These limits are designed to provide reasonable protection against harmful interference in a residential installation. This equipment generates, uses and can radiate radio frequency energy and, if not installed and used in accordance with the instructions, may cause harmful interference to radio communications. However, there is no guarantee that interference will not occur in a particular installation. If this equipment does cause harmful interference to radio or television reception, which can be determined by turning the equipment off and on, the user is encouraged to try to correct the interference by one or more of the following measures:

- Reorient or relocate the receiving antenna.
- Increase the separation between the equipment and receiver.
- Connect the equipment into an outlet on a circuit different from that to which the receiver is connected.
- Consult the dealer or an experienced radio/TV technician for help.

Radiation Exposure Statement

This equipment complies with FCC radiation exposure limits set forth for an uncontrolled environment. This equipment should be installed and operated with a minimum distance of 20 cm (8 in) between the radiator and your

body. This transmitter must not be co-located or operating in conjunction with any other antenna or transmitter.

FCC ID: 2BAFZ-WR007M

ISED Canada

This device contains licence-exempt transmitter(s)/receiver(s) that comply with Innovation, Science and Economic Development Canada's licence-exempt RSS(s). Operation is subject to the following two conditions:

- (1) This device may not cause interference.
- (2) This device must accept any interference, including interference that may cause undesired operation of the device.

IC: 30146-WR007M

CAN ICES-003 (B) / NMB-003 (B)

L'émetteur/récepteur exempt de licence contenu dans le présent appareil est conforme aux CNR d'Innovation, Sciences et Développement Économique Canada applicables aux appareils radio exempts de licence. L'exploitation est autorisée aux deux conditions suivantes:

- (1) l'appareil ne doit pas produire de brouillage, et
- (2) l'appareil doit accepter tout brouillage radioélectrique subi, même si le brouillage est susceptible d'en compromettre le fonctionnement.

Cet équipement doit être installé et utilisé à une distance minimale de 20 cm (8 in) entre le radiateur et votre corps.

IC: 30146-WR007M

CAN ICES-003 (B) / NMB-003 (B)

Europe WEEE Dir. / REG



EN

This symbol on the product and / or accompanying documents means that used electrical and electronic equipment should not be mixed with general household waste. For proper treatment, recovery and recycling, please take this product to an appropriate collection point.

Brazil ANATEL



22535-23-16345

Este equipamento não tem direito à proteção contra interferência prejudicial e não pode causar interferência em sistemas devidamente autorizados. Para maiores informações, consulte o site da ANATEL.

www.anatel.gov.br

Mexico



INSTITUTO FEDERAL DE TELECOMUNICACIONES

La operación de este equipo está sujeta a las siguientes dos condiciones:

(1) es posible que este equipo o dispositivo no cause interferencia perjudicial y

(2) este equipo o dispositivo debe aceptar cualquier interferencia, incluyendo la que pueda causar su operación no deseada.

Marca: Can-Am

Modelo(s): 715008286

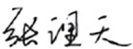
IFT: BRCA7123-38248

Diposición Técnica IFT-012-2019

DECLARATION OF CONFORMITY


EC-DECLARATION OF CONFORMITY

EU DECLARATION OF CONFORMITY

Manufacturer	Manufactured by: Zhejiang Nowvow Mechanical and Electrical Corp., Ltd NO.1689 Xianyuan Road, Jinhua, Zhejiang, China P.C: 321017
Product	Model: Winch Wireless Remote Control Serial No(s). 715008286
The person authorized to compile the technical file	BRP-Rotax GmbH Co. KG, Rotaxstrasse 1, Günskirchen, A-4623, Austria +43 7246 6010
<p>This declaration of conformity is issued under the sole responsibility of the manufacturer. The object of the declaration described above is in conformity with the relevant Union harmonisation legislation:</p> <p>Directive 2014/53/EU EN IEC 62368:2020+A11:2020; ETSI EN 301 489-1 V2.2.3(2019-11); ETSI 301 489-3 V3.1.1(2019-03); ETSI 300 220-1 V3.1.1(2017-02); ETSI 300 220-2 V3.2.1(2018-06); EN 62479: 2010</p> <p>Directive 2011/65/EU IEC 62321-4:2013+AMD1:2017, IEC 62321-5:2013 IEC 62321-6:2015, IEC 62321-7-1:2015 IEC 62321-7-2:2017, IEC 62321-8:2017</p> <p>Directive 2012/19/EU</p>	
Signature & Title:	Date:
 Zhang Litian <u>General Manager</u>	 in Zhejiang <u>09/18/2023</u>

UK-DECLARATION OF CONFORMITY

UK-DECLARATION OF CONFORMITY

Manufacturer	Manufactured by: Zhejiang Nowvow Mechanical and Electrical Corp., Ltd NO.1689 Xianyuan Road, Jinhua, Zhejiang, China P.C: 321017
Product	Model: Winch Wireless Remote Control Serial No(s). 715008286
The person authorized to compile the technical file	BRP UK Ltd., (BWM Accountants Limited) Suite 5.1, 12 Tithebarn Street, Liverpool, L2 2DT
<p>This declaration of conformity is issued under the sole responsibility of the manufacturer</p> <p>The object of the declaration described above is in conformity with the relevant Union harmonisation legislation</p> <p>SI 2016 No.1091 BS EN 55032:2015/A1:2020 BS EN IEC 61000-3-2:2019/A1:2021 BS EN 61000-3-3:2013/A1:2019/A2:2021 BS EN 55035:2017/A11:2020</p>	
<p>Signature & Title:  Date: _____</p> <p>Zhang Litian <u>General Manager</u> in Zhejiang</p> <p><u>09/18/2023</u></p>	